

11.

LIFTING

227 11.1 LIFTING POINTS



228 11.2 EYE BOLTS AND SHACKLES



Now with NFC Inspection Chip

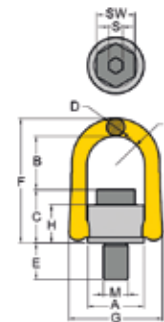
The KEP and SAP lifting points are equipped with NFC/RFID inspection Chip.

Access and update safety inspection procedures with your Smart-Phone. Scan the Chip on the lifting point and get all relevant data to ensure safety inspection compliance.

Free APP for iPhone and Android.



LIFTING POINT



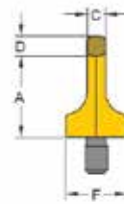
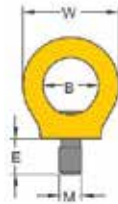
Part No.	W.L.L. (t)	M(mm)	Thread E (mm)	Pich(DIN13)	A	B	C	D	Dimensions		F	G	H	R	S	SW	Torque in Nm	Weight Kg.
SAP-M8	0.5	M8	12	1.25	33	42	28	11	80	58	23	17	6	13	30	0.3		
SAP-M10	0.7	M10	15	1.5	33	41	29	11	80	58	23	17	6	17	60	0.3		
SAP-M12	1.0	M12	20	1.75	33	40	31	11	80	58	23	17	8	19	100	0.3		
SAP-M16	2.0	M16	24	2	50	54	46	17	117	90	36	27	10	24	150	0.9		
SAP-M20	3.0	M20	30	2.5	50	52	49	17	117	90	36	27	12	30	250	1.0		
SAP-M24	5.0	M24	36	3	72	81	59	25	163	125	44	37	14	36	400	2.6		
SAP-M27	5.6	M27	38	3	87	86	79	30	204	148	62	46	17	41	400	4.9		
SAP-M30	7.8	M30	48	3.5	87	94	81	30	204	148	62	46	17	46	500	5.0		
SAP-M36	12.5	M36	54	4	110	112	98	36	247	188	75	57	22	55	1000	9.6		
SAP-M42	15.6	M42	63	4.5	110	101	108	36	247	188	83	57	24	65	1500	10.9		
SAP-M48	20.0	M48	72	5	110	97	113	36	248	188	83	57	27	75	2000	11.6		
SAP-M56	22.0	M56	84	5.5	123	116	121	36	274	202	91	64	27	85	2100	15.0		
SAP-M64	22.5	M64	100	6	123	111	126	36	274	202	91	64	32	95	2200	16.3		

- Rotates through 360° and pivots 180°, and simultaneously allows lifting from any direction.
- Manufactured from forged alloy steel, quenched and tempered.
- Manufactured and tested in accordance with EN1677-1.
- Load rated parts are 100% magnaflux crack detected.
- Individual forged parts and cap screw are traceable to Test Certification.
- Bolts are Metric thread (ASME / ANSI B18.3.1M), specification is alloy socket head screw per DIN EN ISO 4762.
- Proof tested to 2.5 times the WLL.
- Fatigue rated to 20,000 cycles at 1.5 times the WLL.
- All YOKE Lifting points meet or exceed all the requirements of ASME B30.26.
- Quick and simple assembly, just a tapped hole is required



EYE BOLTS AND SHACKLES

KEY EYE POINT



Load directions

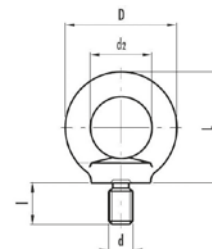



Part No.	W.L.L. (t) x (z)	Bolt Size	A	B	C	D	E	F	W	S	Mass Kg
KEP-M8	0.40 (1)	M8 x 1.50 x 20	36	25	8	11	15	25	44	15	0.1
KEP-M10	0.40 (1)	M10 x 1.50 x 20	36	25	8	11	15	25	44	15	0.1
KEP-M12	0.75 (2)	M12 x 1.75 x 28	42	30	10	13	18	33	52	18	0.2
KEP-M16	1.50 (4)	M16 x 2.00 x 30	51	35	14	13	24	35	61	24	0.3
KEP-M20	2.30 (6)	M20 x 2.00 x 30	57	40	16	17	30	44	70	30	0.6
KEP-M24	3.20 (8)	M24 x 3.00 x 48	70	48	19	21	36	52	84	36	1.0
KEP-M30	4.50 (12)	M30 x 3.50 x 55	86	60	24	26	45	62	108	45	1.8
KEP-M36	7.00 (16)	M36 x 4.00 x 64	103	72	29	32	54	78	130	54	3.2
KEP-M42	9.00 (24)	M42 x 4.50 x 85	120	82	34	38	63	88	150	63	5.0
KEP-M48	12.00 (32)	M48 x 5.00 x 96	137	94	38	43	72	104	168	72	7.6

- Rotates through 360° adjustable in the direction of the load.
- Manufactured from alloy steel, quenched and tempered.
- Manufactured and tested in accordance with EN1677-1.
- Load rated parts are 100% magnaflux crack detected.
- Individual forged parts and cap screw are traceable to Test Certification.
- Bolts are metric thread (ASME / ANSI B18.3.1M), specification is alloy socket head screw per DIN EN ISO 4762.
- Proof tested to 2.5 times the WLL.
- Fatigue rated to 20,000 cycles at 1.5 times the WLL.
- All YOKE Lifting points meet or exceed all the requirements of ASME B30.26.
- Quick and simple assembly, just a tapped hole is required.

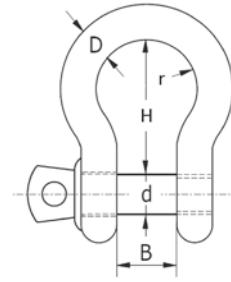



LIFTING EYEBOLTS - ZINC ELECTROPLATED DIN 580



Part No.	d	l	D	d2	L	WLL	
EBGM8	M8	13	36	20	36	140kg	1
EBGM10	M10	17	45	25	45	230kg	1
EBGM12	M12	20	54	30	53	340kg	1
EBGM16	M16	27	63	35	62	700kg	1
EBGM20	M20	30	72	40	71	1200kg	1
EBGM24	M24	36	90	50	90	1800kg	1
EBGM30	M30	45	108	60	109	3600kg	1
EBGM36	M36	54	126	70	128	5100kg	1
EBGM42	M42	63	144	80	147	7000kg	1
EBGM48	M48	68	160	90	168	8600kg	1

ALLOY STEEL BOW SHACKLES - GALVANISED



Part No.	Dim	B	d	H	r	WLL	
ASBSG11	3/8" x 7/16"	17mm	11mm	37mm	26mm	1000kg	1
ASBSG13	7/16" x 1/2"	18mm	13mm	43mm	29mm	1500kg	1
ASBSG16	1/2" x 5/8"	21mm	16mm	48mm	33mm	2000kg	1
ASBSG19	5/8" x 3/4"	27mm	19mm	60mm	43mm	3250kg	1
ASBSG22	3/4" x 7/8"	32mm	22mm	71mm	51mm	4750kg	1
ASBSG25	7/8" x 1"	37mm	25mm	84mm	58mm	6500kg	1
ASBSG28	1" x 1 1/8"	43mm	28mm	95mm	68mm	8500kg	1
ASBSG32	1 1/8" x 1 1/4"	46mm	32mm	104mm	75mm	9500kg	1
ASBSG35	1 1/4" x 1 3/8"	52mm	36mm	119mm	82mm	12000kg	1