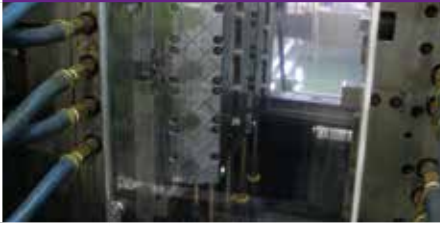


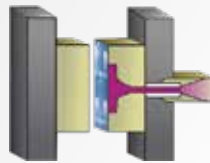
# 09.

## MACHINE ACCESSORIES

**211** 09.1  
MOULD SCREENS



**211** 09.2  
MOULD ALIGN



**212** 09.3  
EJECTOR COUPLING



**216** 09.4  
MACHINE MOUNTS



**217** 09.5  
LINEAR TRANSDUCER




**219** 09.6  
HYDRAULIC ISO COUPLERS



**MOULDSCREENS**



| Part No. | Mould Height | Max Width |  |
|----------|--------------|-----------|---|
| SG-1     | 200 mm       | 550 mm    | 1 (set of 2 pcs)  |
| SG-2     | 300 mm       | 550 mm    | 1 (set of 2 pcs)  |
| SG-3     | 400 mm       | 550 mm    | 1 (set of 2 pcs)  |
| SG-4     | 500 mm       | 550 mm    | 1 (set of 2 pcs)  |
| SG-5     | 600 mm       | 550 mm    | 1 (set of 2 pcs)  |

**Description**

Prevent Plastic Parts scattering around the moulding machine with Scatterguard. The patented new design contains the Ejected Parts within the Mould Area whilst the roller blind action allows a completely unrestricted view of the Mould Face.

Scatterguard allows easy access to the mould with the Ultra Low Profile Design meaning that the mould screens can be installed even when there are lots of water connectors on the side of the mould. Supplied as a kit Scatterguard is simply installed with Magnetic Anchors and is easily movable to other Moulding Machines.


- Ultra Low Profile Design
- Crystal Clear Mould Screen
- Reduce Scrap by Eliminating Contamination and Increase Profits
- Ideal for Cleanroom Applications

**MOLD-ALIGN® - A unique, affordable and easy to use tool that reveals pressure distribution between mould platens**

3 Easy Steps

1

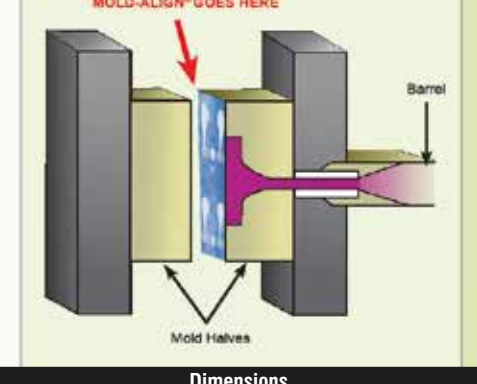
Mold-Align® comes on a roll



2


Place Mold-Align® between the two mold half surfaces


MOLD-ALIGN® GOES HERE



3

Mold-Align® captures a permanent image of surface pressure distribution



| Part No. | Dimensions                |  |
|----------|---------------------------|---|
| MA26-1   | 26,7 cm x 1 m. (Sheet)    | 1   |
| MA26     | 26,7 cm x 15.25 m. (Roll) | 1   |
| MA76-1   | 76,2 cm x 1 m. (Sheet)    | 1   |
| MA76     | 76,2 cm x 15.25 m. (Roll) | 1   |

**Description**

**Specifications:**

Thickness 4 mils (0.1016 mm)  
 Usable Humidity Range 10-90% RH  
 Pressure Range 200 - 6,000 PSI (14 - 422 kg/cm<sup>2</sup>)  
 Temperature Limit 93°C

**Parting Line aligned and Uniform:**

One way to ensure proper mating of the tool halves at the parting line is simply by having a level moulding machine and parallel platens. Levelling a machine requires three machinist levels. If you have shorts and flash, you could have a mould or clamping alignment problem. This may not be the case if you are running a high-speed, thin-wall product—the problem may be simply not enough clamp force. To help establish whether flash stems from a mould or clamp alignment issue, check parting-line mating. In one typical check for uniform clamp pressure at the parting line, blueing agent applied to one mould half will transfer to the other if there is contact at the parting line, but it will not distinguish between low or high touch force. More detailed information can be obtained with Mold-Align® paper, which changes color relative to the amount of contact force. Mold-Align® is an extremely economical and practical solution for determining proper mould alignment. Mold-Align® is a self contained (single sheet) paper that is quickly implemented, requires no training, and reveals a high resolution image of pressure distribution and void spots between mould plates.

## EJECTOR COUPLINGS

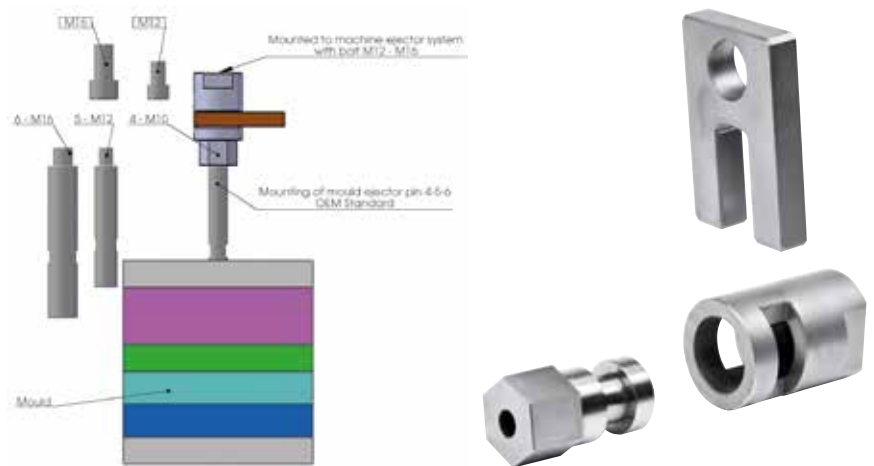
### Description

The UKM is a mechanical ejector coupling for plastic injection moulding machines. Its function is to lock the ejector bars of the injection moulding tool.

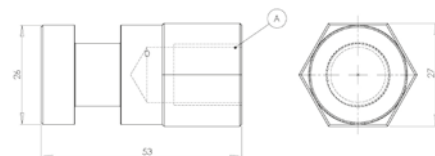
- The coupling process "locking or unlocking" takes place in only seconds.
- Simple construction - easy to install
- Available with M10 – M12 and M16 thread.


### Material:

Steel Type: 1.2510

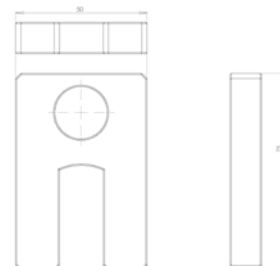


## CONNECTOR NIPPLE



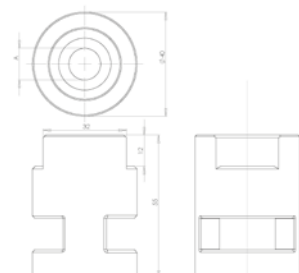
| Part No. | A   |  |
|----------|-----|---|
| UKM10HAN | M10 | 1   |
| UKM12HAN | M12 | 1   |
| UKM16HAN | M16 | 1   |


## LOCKING SLIDE



| Part No. | SIZE     |  |
|----------|----------|---|
| UKKILE   | ONE SIZE | 1   |

## COUPLING



| Part No. | A  |  |
|----------|----|---|
| UKM12HUN | 12 | 1   |
| UKM16HUN | 16 | 1   |

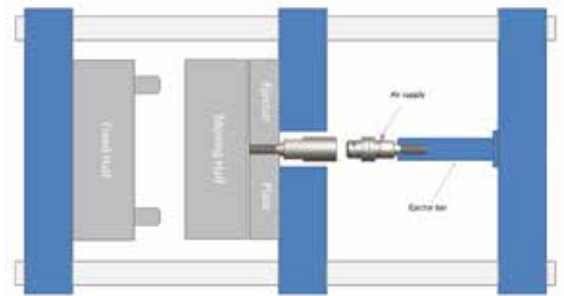


Speed up mould changes with the MPE Quick Connect Ejector Coupling that is designed to connect the mould ejector plate to the machine ejection system.

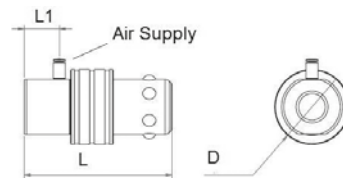
Depending on access inside the moulding machine the coupling may be operated manually or remotely by using compressed air. The coupling is released using air and will stay connected in the event of air failure.

The coupling is available in two different sizes to suit the machine size and can be adapted to a variety of ejector bar threads.

- Reduced Mould Changeover Time
- Safe to Use
- Quick and Efficient
- No tools required



**COUPLING UNIT**



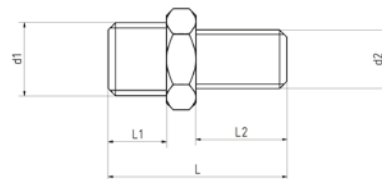
| Part No. | Series | L1 | L  | D  | Working pressure       | Total length in locked position | Air Supply Thread | Female Thread | Ejector Force per coupler |   |
|----------|--------|----|----|----|------------------------|---------------------------------|-------------------|---------------|---------------------------|---|
| MPE-C-1  | 1"     | 18 | 58 | 27 | Min. 4 bar / max 6 bar | 101 mm                          | M5                | M12           | 1500 kg                   | 1 |

**SOCKET UNIT**



| Part No. | Series | L  | D  | Female Thread | Ejector Force per coupler |   |
|----------|--------|----|----|---------------|---------------------------|---|
| MPE-S-1  | 1"     | 58 | 25 | M12           | 1500 kg                   | 1 |

**ADAPTOR**



| Part No.  | Series | d1       | d2       | L1 | L2 | L  | SW |   |
|-----------|--------|----------|----------|----|----|----|----|---|
| MPE-A-1-A | 1"     | M12x1,75 | M12x1,75 | 10 | 20 | 35 | 19 | 1 |
| MPE-A-1-B | 1"     | M12x1,75 | 3/8"-16  | 10 | 20 | 35 | 19 | 1 |
| MPE-A-1-C | 1"     | M12x1,75 | M16x2    | 10 | 20 | 35 | 19 | 1 |

## EJECTOR COUPLINGS



Ideal for use with: Quick Mould Change systems and Two-stage Ejection

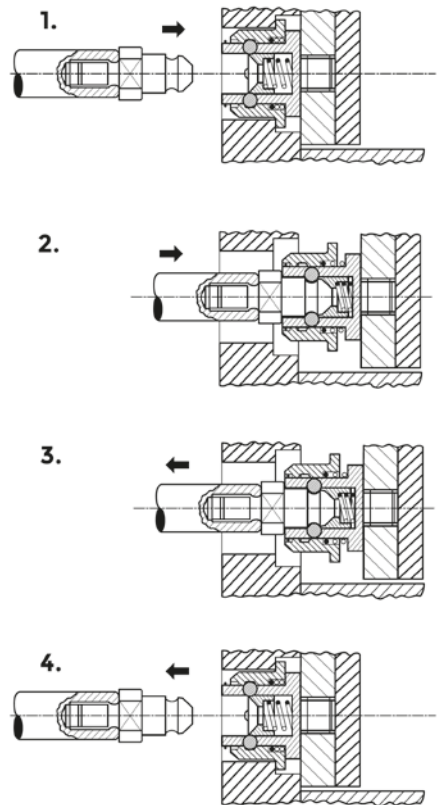
Designed to provide a quick method of attaching the ejector plate in your mould to the ejection system in your moulding machine. Provides positive ejector plate return while greatly reducing set-up time.

Perfectly suited for those moulding machines where the ejector plate on the machine is difficult to reach. Ideal when center ejection is desired, but impossible to "tie-in". Works with either hydraulic or mechanical ejection

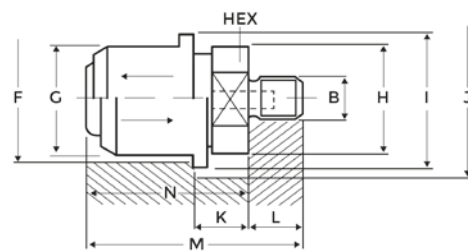
Uses and Advantages:

- Quick and easy installation (even on existing moulds). Return of the ejector plate is assured.
- Part ejector plate is assured.
- Coupling is obtained in any position, disconnecting is after the ejector plate is fully returned.
- Fast acting up to 30 strokes/minute. No wearing parts.
- Can be used on all injection machines equipped with hydraulic or mechanical ejection.
- Set-up time can be greatly reduced.
- Reduce noise on machines with mechanical knockouts. Especially suited for injection machines that do not have easy access to the ejector plate.
- Allows for center ejection to be tied in.
- No Grease should be applied to these Products.

### Sequence of operation



## EJECTOR COUPLING

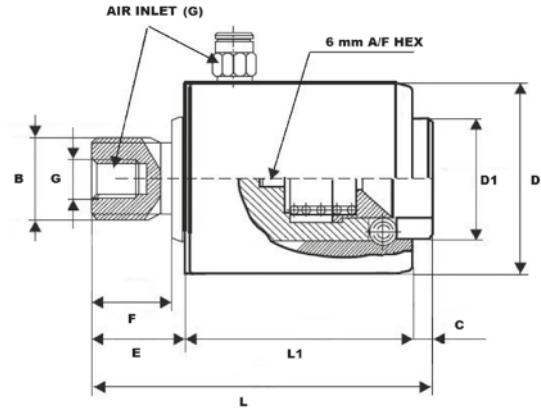
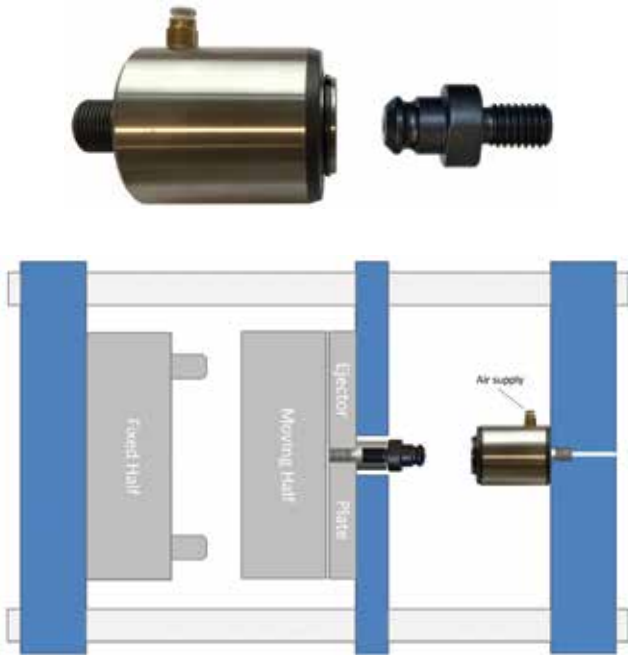


| Part No.  | B        | F  | G  | H  | I  | J  | K  | L  | M    | Pull Force | Size |   |
|-----------|----------|----|----|----|----|----|----|----|------|------------|------|---|
| EJC-F-1-1 | M12X1,75 | 34 | 34 | 32 | 39 | 43 | 9  | 15 | 42,5 | 1500 kg    | 1    | 1 |
| EJC-F-1-2 | M16X1,5  | 34 | 34 | 32 | 39 | 43 | 9  | 15 | 42,5 | 1500 kg    | 1    | 1 |
| EJC-F-1-3 | M16X2    | 34 | 34 | 32 | 39 | 43 | 9  | 15 | 42,5 | 1500 kg    | 1    | 1 |
| EJC-F-2-1 | M16X1,5  | 40 | 40 | 38 | 48 | 53 | 13 | 15 | 52   | 2400 kg    | 2    | 1 |
| EJC-F-2-2 | M16X2    | 40 | 40 | 38 | 48 | 53 | 13 | 15 | 52   | 2400 kg    | 2    | 1 |
| EJC-F-3-1 | M16X1,5  | 58 | 58 | 56 | 65 | 70 | 17 | 18 | 68   | 3200 kg    | 3    | 1 |
| EJC-F-3-2 | M16X2    | 58 | 58 | 56 | 65 | 70 | 17 | 18 | 68   | 3200 kg    | 3    | 1 |
| EJC-F-3-3 | M18X1,5  | 58 | 58 | 56 | 65 | 70 | 17 | 18 | 68   | 3200 kg    | 3    | 1 |
| EJC-F-3-4 | M20X1,5  | 58 | 58 | 56 | 65 | 70 | 17 | 18 | 68   | 3200 kg    | 3    | 1 |
| EJC-F-3-5 | M20X2,5  | 58 | 58 | 56 | 65 | 70 | 17 | 18 | 68   | 3200 kg    | 3    | 1 |
| EJC-F-3-6 | M24X1,5  | 58 | 58 | 56 | 65 | 70 | 17 | 18 | 68   | 3200 kg    | 3    | 1 |
| EJC-F-3-7 | M27X1,5  | 58 | 58 | 56 | 65 | 70 | 17 | 18 | 68   | 3200 kg    | 3    | 1 |
| EJC-F-3-8 | M30X1,5  | 58 | 58 | 56 | 65 | 70 | 17 | 18 | 68   | 3200 kg    | 3    | 1 |

### Description

Material: 1.7147 - 60 HRC

**PNEUMATIC EJECTOR COUPLING**

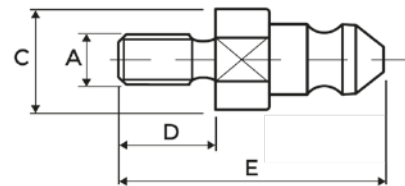


| Part No.   | D  | D1 | L  | L1   | E    | F  | B       | G 4-6 Bar | Pull Force | Size |   |
|------------|----|----|----|------|------|----|---------|-----------|------------|------|---|
| EJC-FP-200 | 48 | 39 | 68 | 28,5 | 21   | 15 | M18X1,5 | R1/8"     | 2700 kg    | 2    | 1 |
| EJC-FP-300 | 58 | 36 | 94 | 66   | 22,5 | 20 | M20X1,5 | R1/8"     | 3400 kg    | 3    | 1 |
| EJC-FP-305 | 58 | 36 | 94 | 66   | 22,5 | 20 | M20X2,5 | R1/8"     | 3400 kg    | 3    | 1 |

**Description**

Ejector Coupling to ensure rapid and safe mould changes designed to fit with standard EJC-M connectors.  
 The EJC-FF coupling is air operated. The coupling connects mechanical to the plug EJC-M, and disconnected using air in one of the 2 ports.  
 The Unit EJC-FF is installed on the machine and the plug EJC-M is installed on the mould/rod.

**EJECTOR NIPPLE**



| Part No.  | A        | C    | D  | E    | Pull Force | Size |   |
|-----------|----------|------|----|------|------------|------|---|
| EJC-M-1-1 | M10X1,5  | 22,8 | 20 | 45,5 | 1500 kg    | 1    | 1 |
| EJC-M-1-2 | M12X1,75 | 22,8 | 20 | 45,5 | 1500 kg    | 1    | 1 |
| EJC-M-1-3 | M14X2    | 22,8 | 20 | 45,5 | 1500 kg    | 1    | 1 |
| EJC-M-1-4 | M16X2    | 22,8 | 20 | 45,5 | 2400 kg    | 1    | 1 |
| EJC-M-2-1 | M10X1,5  | 25,8 | 20 | 55   | 2400 kg    | 2    | 1 |
| EJC-M-2-2 | M12X1,75 | 25,8 | 20 | 55   | 2400 kg    | 2    | 1 |
| EJC-M-2-3 | M14X2    | 25,8 | 20 | 55   | 2400 kg    | 2    | 1 |
| EJC-M-2-4 | M16X2    | 25,8 | 20 | 55   | 2400 kg    | 2    | 1 |
| EJC-M-3-1 | M16X2    | 35   | 25 | 68   | 3200 kg    | 3    | 1 |
| EJC-M-3-2 | M18X2,5  | 35   | 25 | 68   | 3200 kg    | 3    | 1 |
| EJC-M-3-3 | M20X2,5  | 35   | 25 | 68   | 3200 kg    | 3    | 1 |
| EJC-M-3-4 | M24X3    | 35   | 25 | 68   | 3200 kg    | 3    | 1 |
| EJC-M-3-5 | M27X3    | 35   | 25 | 68   | 3200 kg    | 3    | 1 |
| EJC-M-3-6 | M30X3,5  | 35   | 25 | 68   | 3200 kg    | 3    | 1 |


**Description**

Material: 1.7147 - 60 HRC

## MACHINE MOUNTS

### STANDARD MACHINE MOUNTS - SUPPLIED WITH ADJUSTING SCREWS



| Part No. | Diameter | Load (kg) | Adjusting Screw | Height  |  |
|----------|----------|-----------|-----------------|---------|---|
| SMM01    | 80mm     | 200 kg    | M12x1.25x120    | 38-50mm | 1   |
| SMM02    | 120mm    | 400 kg    | M16x1.5x120     | 46-59mm | 1   |
| SMM03    | 160mm    | 1000 kg   | M20x1.5x170     | 53-68mm | 1   |
| SMM04    | 160mm    | 2500 kg   | M20x1.5x170     | 54-69mm | 1   |
| SMM05    | 200mm    | 3800 kg   | M20x1.5x170     | 56-71mm | 1   |

#### Description

Up to 15 mm ff Adjustment

Galvanised Steel Finish

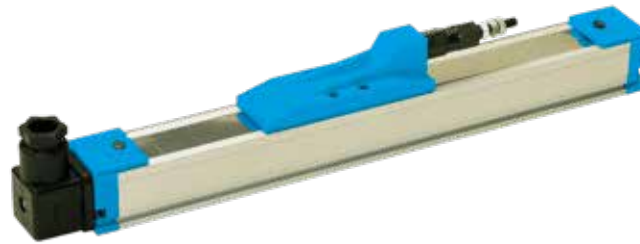
Supplied Complete with Adjusting Screw





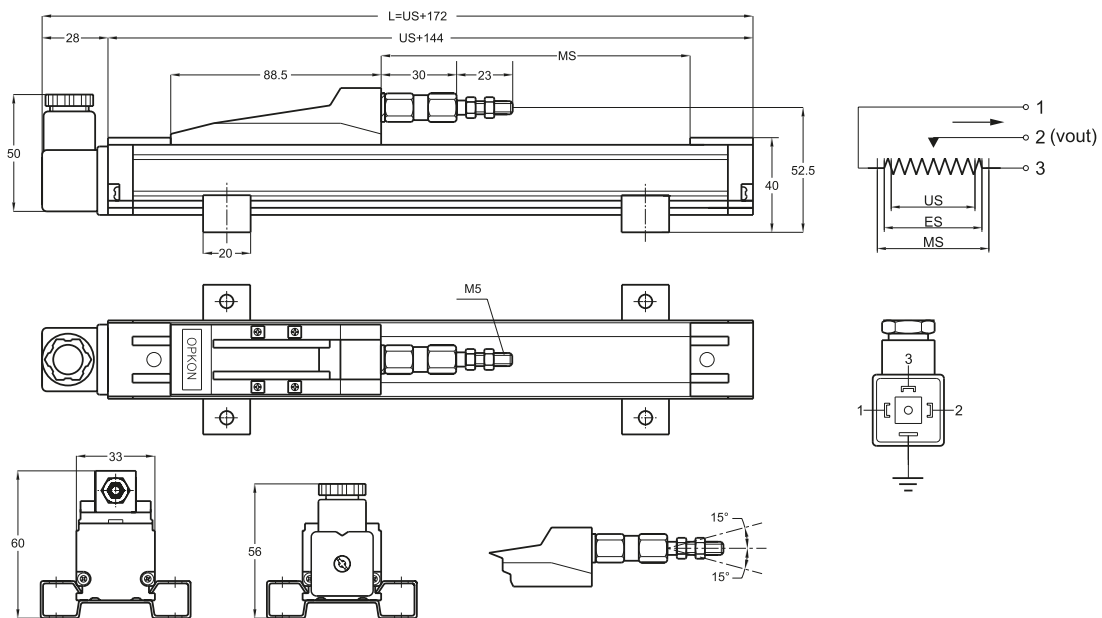
# LINEAR TRANSDUCERS

## TRANSDUCER WITHOUT ROD

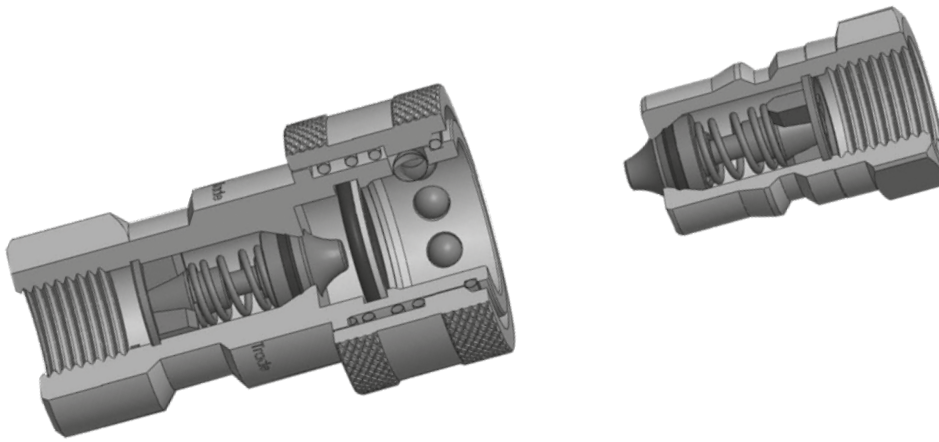


### Technical data

|                             |                                     |
|-----------------------------|-------------------------------------|
| Measurement Stroke          | 100 to 1500 mm                      |
| Linearity                   | ± %0,05                             |
| Repeatability               | < 0,01 mm                           |
| Resolution                  | Infinite                            |
| Resistance                  | 5 kOhm                              |
| Resistance Tolerance        | ± %20                               |
| Load Resistance             | 100 kOhm min.                       |
| Recommended Cursor Current  | < 1 μA                              |
| Permissible Applied Voltage | 28VDC max.                          |
| Electrical Connections      | 4 pole hydraulic type connector     |
| Displacement Speed          | < 1,5 m/s                           |
| Mechanical Life             | 100 million cycles                  |
| Case Dimensions             | 33 mm x 33 mm                       |
| Case Material               | Anodized aluminium                  |
| Mechanical Fixing           | Variable brackets                   |
| IP Degree                   | IP 40 /If mounted upside down IP 53 |
| Operating Temperature       | -20°C ... +80°C                     |
| Storage Temperature         | -30°C ... +90°C                     |




| Part No. | US (usefull stroke) | MS (Mechanical stroke) | L (total length) |   |
|----------|---------------------|------------------------|------------------|---|
| MPH150   | 150                 | 154                    | 322              | 1 |
| MPH200   | 200                 | 204                    | 372              | 1 |
| MPH225   | 225                 | 229                    | 397              | 1 |
| MPH300   | 300                 | 304                    | 472              | 1 |
| MPH400   | 400                 | 404                    | 572              | 1 |
| MPH500   | 500                 | 504                    | 672              | 1 |



**ISO A COUPLERS**




| Part No.     | Thread size | Pressure Bar |  |
|--------------|-------------|--------------|---|
| FISO-A14BSP  | 1/4" BSP    | 350          | 1   |
| FISO-A38BSP  | 3/8" BSP    | 300          | 1   |
| FISO-A12BSP  | 1/2" BSP    | 250          | 1   |
| FISO-A34BSP  | 3/4" BSP    | 250          | 1   |
| FISO-A100BSP | 1" BSP      | 230          | 1   |

**Material:**  
Steel (plated)


**ISO A PLUGS**



| Part No.     | Thread size | Pressure Bar |  |
|--------------|-------------|--------------|---|
| MISO-A14BSP  | 1/4" BSP    | 350          | 1   |
| MISO-A38BSP  | 3/8" BSP    | 300          | 1   |
| MISO-A12BSP  | 1/2" BSP    | 250          | 1   |
| MISO-A34BSP  | 3/4" BSP    | 250          | 1   |
| MISO-A100BSP | 1" BSP      | 230          | 1   |

**ISO B COUPLERS**




| Part No.    | Thread size | Pressure Bar |  |
|-------------|-------------|--------------|---|
| FISO-B14BSP | 1/4" BSP    | 350          | 1   |
| FISO-B38BSP | 3/8" BSP    | 300          | 1   |
| FISO-B12BSP | 1/2" BSP    | 250          | 1   |

**Material:**  
Steel (plated)

**ISO B PLUGS**



| Part No.    | Thread size | Pressure Bar |  |
|-------------|-------------|--------------|---|
| MISO-B14BSP | 1/4" BSP    | 350          | 1   |
| MISO-B38BSP | 3/8" BSP    | 300          | 1   |
| MISO-B12BSP | 1/2" BSP    | 250          | 1   |