

# 05.

## MATERIAL HANDLING

**129** 05.1  
LOADER HOSES



**131** 05.2  
HOT AIR HOSES



**132** 05.3  
HOSE CLAMPS



**133** 05.4 CAMLOCK  
COUPLINGS ALUMINUM



**137** 05.5  
HOPPER MAGNETS



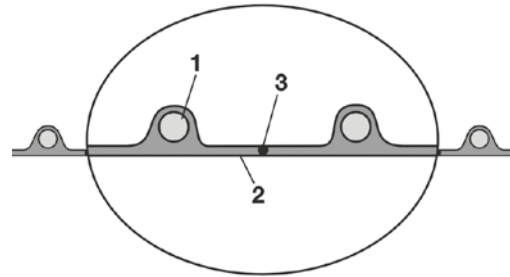
**137** 05.6  
MATERIAL SCOOPS



**138** 05.7 BALANCES AND  
MOISTURE ANALYSER



**ANTI-STATIC PU HOSE/PVC HELIX**



Part No.	Ø ID (mm)	Min Wall thickness (mm)	Bending Radius (mm)	Roll Length (m)	Wire Clip Ref
PUP25	25	0.5	17,5	10	3030200
PUP32	32	0.5	19	10	3030226
PUP38	38	0.5	31,0	10	3030250
PUP40	40	0.5	40,0	10	3030250
PUP45	45	0.5	42,5	10	3030269
PUP50	50	0.5	45,0	10	3030285
PUP60	60	0.5	50,0	10	3030306
PUP64	64	0.5	49	10	3030306

**Description**

**Applications:**

Flexible hose/ ducting for abrasive granulate and powder

**Temperature range:**

-20°C to 70°C  
Short time to 80°C

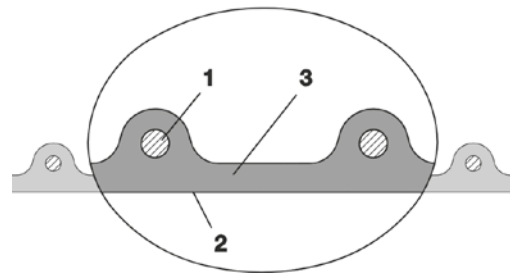
**Properties:**

- Light weight
- Abrasion-resistant
- Microbe resistant
- Good resistance to chemicals
- Phthalate-free
- Grounding wire for discharging of electrostatic charging

**Design, Material:**

1. hard plastic spiral integrated in wall, spiral: rigid PVC
2. smooth interior, wall: permanently antistatic premium ester-polyurethane (Pre-PUR®)
3. grounding wire

**PU HOSE/STEEL HELIX**



Part No.	Ø ID (mm)	Min Wall thickness (mm)	Roll Length (m)	Wire Clip Ref
PURH32	32	1,5	10	3030242
PURH38	38	1,5	10	3030250
PURH40	40	1,5	10	3030250
PURH45	45	1,5	10	3030269
PURH50	50	1,5	10	3030285
PURH60	60	1,5	10	3030306
PURH64	64	1,5	10	3030306

**Description**

**Applications:**

- Flexible hose/ ducting for high throughput of abrasive powder, bulk material, granulate and for gases
- Plastic industry, conveying of granulates and powders: granulate conveying device, vacuum hopper/ conveyor, suction conveyor, dosing system, bulk-bag (big bag)-charging and discharging, shredder, mill, extruder, injection moulding machine

**Temperature range:**

-40°C to 90°C  
short time to 125°C

**Properties:**

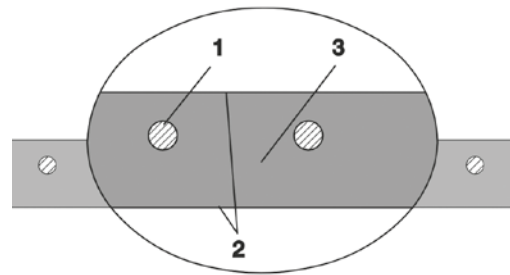
- Heavy duty
- Highly abrasion resistant
- Increased pressure and vacuum resistance
- Microbe resistant
- Good resistance to oil, gasoline and chemicals
- Very good low temperature flexibility

**Design, Material:**

1. copper coated spring steel wire firmly embedded in wall
2. wall: permanently antistatic premium esterpolypurethane (Pre-PUR®)
3. wall thickness 1,4 - 1,5 mm approx.

# LOADER HOSES

## PVC HOSE



Part No.	Ø ID (mm)	Ø OD (mm)	Bending Radius	Roll Length	Clamp Ref.
PAPVC19	20	27	41	30	HDC2325
PAPVC25	25	33	73	30	HDC3134
PAPVC31	32	40,4	79,0	30	HDC3740
PAPVC38	38	47	91	30	HDC4347
PAPVC40	40	49	100	30	HDC4751
PAPVC45	45	54	118	30	HDC5155
PAPVC50	50	60	135	30	HDC5963
PAPVC64	64	74,8	228,0	30	HDC7379
PAPVC75	76	88,2	262,0	30	HDC8591

### Description

#### Applications:

Plastic industry, conveying of granulates and powders: granulate conveying device, vacuum hopper/ conveyor, suction conveyor, dosing system, bulk-bag (big bag)-charging and discharging, shredder, mill, extruder, injection moulding machine.

#### Temperature range:

-20°C to 70°C  
Short time to 80°C

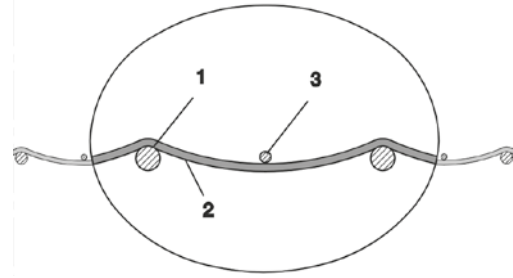
#### Properties:

- Heavy duty
- Very high pressure, vacuum and compression resistance
- Food grade wall, complies with: EU-Directive 10/2011 and EC 1935/2004 and the latest EU-Directive 2015/174, according to FDA 21 CFR, according to FDA 21 CFR, 177.1210
- Good resistance to alkalis and acids
- Good resistance to chemicals
- Phthalate-free

#### Design, Material:

1. spring steel wire spiral embedded in wall
2. smooth interior and exterior, wall: high grade soft PVC
3. wall thickness 3 to 8 mm approx., depending on diameter

**SILICON DRYER HOSE**



Part No.	Ø ID (mm)	Ø OD (mm)	Bending Radius	Roll Length	Clamp Ref.
SIL132	32	35	19	4	3030200
SIL138	38	42	23	4	3030226
SIL141	41	45,0	25,0	4	3030234
SIL151	51	55	30	4	3030269
SIL160	63	67	36	4	3030285
SIL170	70	74	39	4	3030306

**Description**

**Applications:**

- Flexible hose/ ducting for hot and cold gases
- Granulate/ plastic dryer, hot air dryer
- Film blowing machine, cooling air at the extrusion tool
- Air supply: UV dryer, IR dryer
- Clean room ventilation, semiconductor production machine.

**Temperature range:**

-70°C to 260°C  
short time to 280°C

**Design, Material:**

- Silicon hose
1. spring steel wire
  2. fabric-reinforced tape, wall: Silicon coated glass fabric
  3. cord as reinforcement

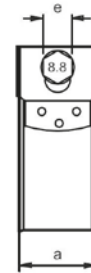
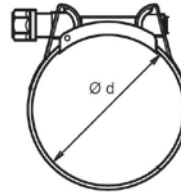
**Properties:**

- Fibre reinforced
- Highly flexible
- Very good heat resistance
- Conforms to RoHS guideline

# HOSE CLAMPS

## HOSE CLAMPS HEAVY DUTY

STAINLESS  
STEEL



Part No.	$\varnothing$	e	a		Hose ref.
HDC2325	23-25	8	18	50	PAPVC19
HDC3134	31-34	11	20	50	PAPVC25
HDC3740	37-40	11	20	50	PAPVC31
HDC4347	43-47	11	20	50	PAPVC38-40
HDC5155	51-55	11	20	25	PAPVC45
HDC5963	59-63	11	20	25	PAPVC50
HDC7379	73-79	13	25	25	PAPVC64
HDC8591	85-91	13	25	25	PAPVC75

## WIRE CLIP WITH SCREW - IDEAL FOR LOADER HOSES WITH OUTER HELIX



Part No.	Size range mm
3030200	33-37
3030218	35,5-40
3030226	38,5-43
3030234	41-46
3030242	43,5-49
3030250	46,5-53
3030269	50,5-56
3030277	53,5-60
3030285	56,5-64
3030293	60-68
3030306	64-72

### Description

Wire:	Steel wire B-UNI 3823	This clip was specially designed for use with hoses incorporating an outer helix. It is generally used when installing ventilation ducting.
Screw:	6.6 grade steel Cr3 zinc-plated	

The double-wire construction of this clip means that it sits comfortably on either side of the helix and can then be clamped down firmly thanks to the screw-tightening system.

**Camlock Couplings Aluminium**

A range of Camlock couplings made according to A-A-59326, DIN 2828

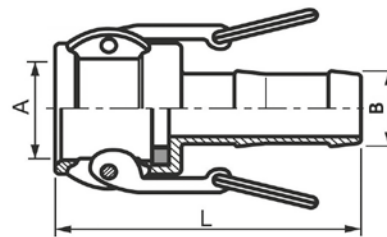
Camlock is a safe coupling for use with hoses and pipes for many different media such as dry goods, polymer granules, cooling water, chemicals etc. The coupling connects easily by opening the wings, inserting the male part and then closing the wings by hand.

Body material :Aluminium A356 or A104

handle material: Brass

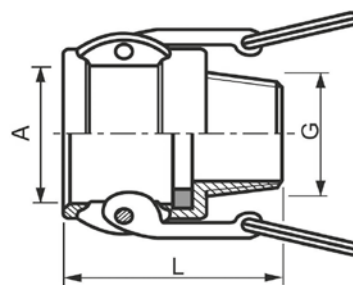
Sealing: NBR.

**HOSE TAIL LEVER COUPLING TYPE C**



Part No.	Size	B	A	L	Max pressure
MPC-HC19	75	3/4"   19 mm.	32,4	91	17 bar
MPC-HC25	100	1"   25 mm.	37,2	105	17 bar
MPC-HC32	125	1.1/4"   32 mm.	46	112	17 bar
MPC-HC38	150	1.1/2"   38 mm.	53,9	118	17 bar
MPC-HC50	200	2"   50 mm.	63,7	135	17 Bar
MPC-HC64	250	2.1/2"   64 mm.	76,4	147	10 bar
MPC-HC75	300	3"   75 mm.	92,1	162	8 bar

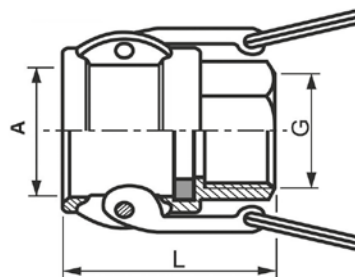
**MALE THREADED LEVER COUPLING TYPE B**



Part No.	Size	G	A	L	Max pressure
MPC-MC3/4	75	3/4"	32,4	47	17 bar
MPC-MC1	100	1"	37,2	56	17 bar
MPC-MC1-1/4	125	1.1/4"	46	64	17 bar
MPC-MC1-1/2	150	1.1/2"	53,9	66	17 bar
MPC-MC2	200	2"	63,7	76	17 Bar
MPC-MC2-1/2	250	2.1/2"	76,4	83	10 bar
MPC-MC3	300	3"	92,1	87	8 bar

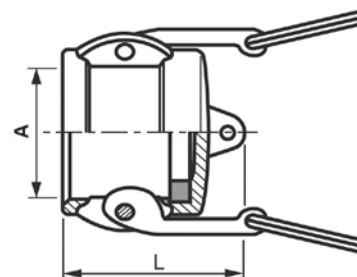
## CAMLOCK COUPLINGS ALUMINIUM

### FEMALE THREADED LEVER COUPLING TYPE D



Part No.	Size	B	A	L	Max pressure
MPC-FC3/4	75	3/4"	32,4	47	17 bar
MPC-FC1	100	1"	37,2	56	17 bar
MPC-FC1-1/4	125	1.1/4"	46	64	17 bar
MPC-FC1-1/2	150	1.1/2"	53,9	67	17 bar
MPC-FC2	200	2"	63,7	76	17 Bar
MPC-FC2-1/2	250	2.1/2"	76,4	83	10 bar
MPC-FC3	300	3"	92,1	87	8 bar

### DUST CAP LEVER COUPLING TYPE DC



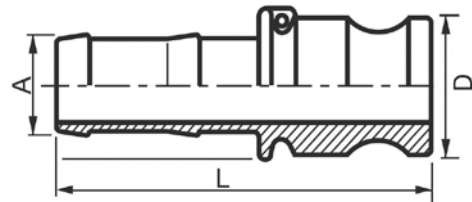
Part No.	Size	A	L	Max pressure
MPC-DC3/4	75	32,4	32	17 bar
MPC-DC1	100	37,2	40	17 bar
MPC-DC1-1/4	125	46	46	17 bar
MPC-DC1-1/2	150	53,9	48	17 bar
MPC-DC2	200	63,7	55	17 Bar
MPC-DC2-1/2	250	76,4	57	10 bar
MPC-DC3	300	92,1	59	8 bar

**GASKETS FOR CAMLOCK COUPLERS**



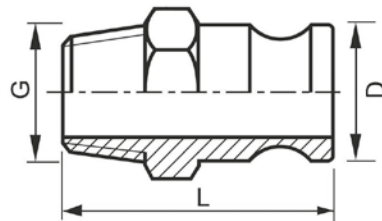
Part No. NBR	Part No. Viton	Size	Dimension (mm)
G3/4 NBR	G3/4 FKM	3/4"	35 x 22 x 5.5
G1NBR	G1FKM	1"	40 x 27 x 6.4
G1-1/4NBR	G1-1/4FKM	1-1/4"	50 x 35 x 6.4
G1-1/2NBR	G1-1/2FKM	1-1/2"	56 x 41 x 6.4
G2NBR	G2FKM	2"	67 x 51 x 6.4
G2-1/2NBR	G2-1/2FKM	2-1/2"	80 x 64 x 6.4
G3NBR	G3FKM	3"	95 x 76 x 6.4

**HOSETAIL PLUG TYPE E**



Part No.	Size	A	D	L	Max pressure
MPC-HP3/4	75	3/4"   19 mm.	32,1	86	17 bar
MPC-HP1	100	1"   25 mm.	36,7	103	17 bar
MPC-HP1-1/4	125	1.1/4"   32 mm.	45,5	107	17 bar
MPC-HP1-1/2	150	1.1/2"   38 mm.	53,4	114	17 bar
MPC-HP2	200	2"   50 mm.	63,1	131	17 Bar
MPC-HP2-1/2	250	2.1/2"   64 mm.	75,8	142	10 bar
MPC-HP3	300	3"   75 mm.	91,5	168	8 bar

**MALE THREADED PLUG TYPE F**

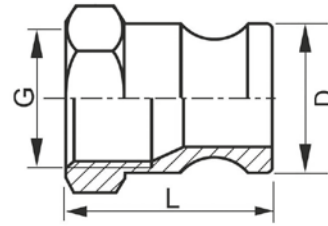


Part No.	Size	G	D	L	Max pressure
MPC-MP3/4	75	3/4"	32,1	55	17 bar
MPC-MP1	100	1"	36,7	67	17 bar
MPC-MP1-1/4	125	1.1/4"	45,5	74	17 bar
MPC-MP1-1/2	150	1.1/2"	53,4	76	17 bar
MPC-MP2	200	2"	63,1	87	17 Bar
MPC-MP2-1/2	250	2.1/2"	75,8	97	10 bar
MPC-MP3	300	3"	91,5	100	8 bar



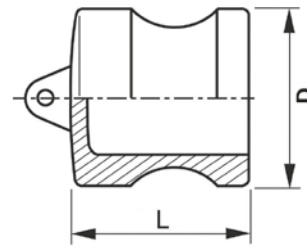
# CAMLOCK COUPLINGS ALUMINIUM

## FEMALE THREADED PLUG TYPE A



Part No.	Size	G	D	L	Max pressure
FPC-FP3/4	75	3/4"	32,1	40	17 bar
FPC-FP1	100	1"	36,7	48	17 bar
FPC-FP1-1/4	125	1.1/4"	45,5	54	17 bar
FPC-FP1-1/2	150	1.1/2"	53,4	56	17 bar
FPC-FP2	200	2"	63,1	63	17 Bar
FPC-FP2-1/2	250	2.1/2"	75,8	68	10 bar
FPC-FP3	300	3"	91,5	69	8 bar

## DUST PLUG TYPE DP



Part No.	Size	D	L	Max pressure
DPC-DP3/4	75	32,1	28	17 bar
DPC-DP1	100	36,7	35	17 bar
DPC-DP1-1/4	125	45,5	38	17 bar
DPC-DP1-1/2	150	53,4	40	17 bar
DPC-DP2	200	63,1	49	17 Bar
DPC-DP2-1/2	250	75,8	50	10 bar
DPC-DP3	300	91,5	51	8 bar

**HOPPER MAGNETS**

STAINLESS  
STEEL



Part No.	Type	Strength (Gauss)	Size Diameter (mm)
D100	Standard	2500	100
D100-ES	Extra Strong	10000	100
D150	Standard	2500	150
D150-ES	Extra Strong	10000	150
D200	Standard	2500	200
D200-ES	Extra Strong	10000	200
D250	Standard	2500	250
D300	Standard	2500	300

**Description**

- Standard: Rare Earth
- Extra Strong: Neodymium
- Separation Magnets
- Stainless Steel encased
- Place direct in the Hopper to separate metal from polymers and avoid damage of nozzle and hotrunners etc.

**MATERIAL SCOOP**



Part No.	Size
2885	1.9ltr

**Description**

1.9Ltr Material Scoop  
Ideal for scooping granules and tipping into material hoppers

# BALANCES AND MOISTURE ANALYSER

## COMPACT BALANCE



Part No.	Capacity	Readability	Platform Size
MCB500	500 g	0,1 g	Ø 120 mm
MCB2000	2000 g	0,1 g	Ø 120 mm

**Description**

Compact balance for weighing parts up to 2000 g

**Features:**

Backlit LCD display  
 Stainless steel pan  
 ShockProtect™ overload three-point protection  
 Can be stacked for storage  
 Lock down mounting slot for Kensington™ type lock and cable  
 Dual tare keys  
 Lightweight and portable  
 Colour coded, sealed keypad

Modern low profile design  
 Low cost and simple to use  
 External calibration  
 Auto sleep / power down function to save battery life  
 Auto power off  
 Low battery indication  
 AC Adaptor

**Applications:**

Weighing  
 Percentage weighing  
 Parts counting  
 Below balance weighing  
 Weight accumulation

## PRECISION BALANCE



Part No.	Capacity	Readability	Platform Size
MPB410	410 g	0,001 g	Ø 120 mm

**Description**

Precision Balance for weighing parts with very accurate tolerance.

**Features:**

Backlit LCD display  
 Colour coded keys  
 Level indicator with adjustable levelling feet  
 Removable draft shield supplied  
 Robust metal housing  
 Sealed keypad  
 External calibration  
 Pan lifter to easily remove samples

**Applications:**

Weighing  
 Net / Total  
 Check weighing  
 Percentage weighing  
 Weight accumulation

Parts counting  
 Animal / dynamic weighing  
 Density determination  
 Below balance weighing

## DISPOSABLE SAMPLE PANS



Part No.	Deep (mm)	
MMB-P50	10 mm	50

**Description**

Aluminum sample pans are ideal for moisture analysis testing. The disposable pans fit neatly on the MMB moisture analysers pan holder. They are 10mm deep to keep the items being weighed in place. This pack holds 50 disposable pans.

**MOISTURE ANALYSER**



Part No.	Capacity	Readability	Platform Size
MMB65	65 g	0,001 g	Ø 100 mm

**Description**

The MMB Moisture Analyser makes moisture analysis of plastic granules easy for fast and accurate results. The moisture analyzer comprises of a balance and an integrated heater. The analyser will first weigh the material sample in a foil tray at the start of the process; it will then heat the sample up, removing the moisture, and continue heating sample until it stops losing weight. This data is then used to calculate the moisture content based on the moisture loss rate, known as a drying curve.

**Features:**

- USB port for memory card and USB I/O interface
- RS-232 interface
- Built-in memories for storing products and settings
- 3 settings for heating sample, ramp up, step and standard
- Automatic test start setting for when the lid is closed
- Pan lifter to easily remove samples
- Large backlit display with dual text prompts

**CALIBRATION WEIGHTS**



Part No.	Weight
CALW20G	20 g
CALW50G	50 g
CALW200G	200 g
CALW1000G	1000 g

**Description**

Ideal for calibrating Scales and moisture analyser.

**THERMAL PRINTER**



Part No.	Power Supply	Paper Width
ATP-100	110/230 VAC - 8,5 VDC	57,5

**Description**

Mouldpro's ATP thermal printer is compact and ideally suited for use with balances and scales. Simple-to-use features combined with quick set-up makes for a truly versatile printer.

**Features:**

- A single positive push-button feed key and three easy-to-read LED indicators make operation simple.
- Combined with the compact design, which takes little space on the bench, this makes the ATP the right choice for any printing applications.

**Spare Paper:**

- No. ATP-100-1 Thermal paper
- No. ATP-100-10 Thermal paper (10pk)