

11.

LIFTING

219

11.1 EYEBOLTS



220

11.2 SWIVEL LIFTING RINGS

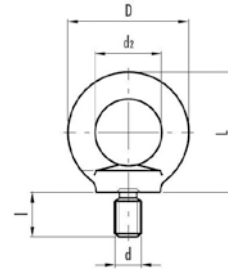



222

11.3 DOUBLE SWIVEL RING & SHACKLES



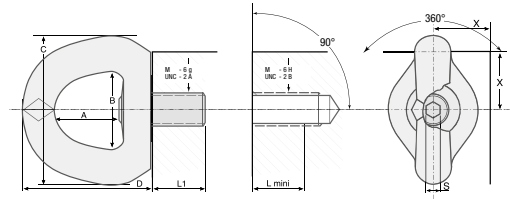
LIFTING EYEBOLTS - ZINC ELECTROPLATED DIN 580



Part No.	d	l	D	d2	L	WLL	
EBGM8	M8	13	36	20	36	140kg	1
EBGM10	M10	17	45	25	45	230kg	1
EBGM12	M12	20	54	30	53	340kg	1
EBGM16	M16	27	63	35	62	700kg	1
EBGM20	M20	30	72	40	71	1200kg	1
EBGM24	M24	36	90	50	90	1800kg	1
EBGM30	M30	45	108	60	109	3600kg	1
EBGM36	M36	54	126	70	128	5100kg	1
EBGM42	M42	63	144	80	147	7000kg	1
EBGM48	M48	68	160	90	168	8600kg	1

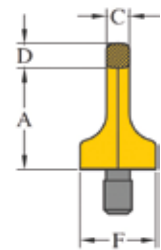
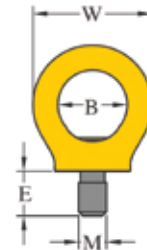
SWIVEL LIFTING RINGS

SWIVEL EYEBOLTS



Part	SF 5:1 WLL (t)	SF 4:1 WLL (t)	Diameter	L1	N.m	X	S	A	B	C	D	Weight kg	
SEBM8	0,4	0,5	M8(x1,25)	14	6	20	4	30	34	60	57	0,24	1
SEBM10	0,5	0,7	M10(x1,5)	17	10	20	4	30	34	60	57	0,24	1
SEBM12	0,8	0,9	M12(x1,75)	21	15	20	4	30	34	60	57	0,24	1
SEBM16	1,4	1,8	M16(x2)	27	50	35	8	38	45	90	78	0,8	1
SEBM20	2	2,7	M20(x2,5)	30	100	35	8	38	45	90	78	0,8	1
SEBM24	3,2	3,8	M24(x3)	36	160	50	14	58	70	134	115	2,6	1
SEBM30	5,5	6,3	M30(x3,5)	45	250	50	14	58	70	134	115	2,7	1
SEBM36	9	11	M36(x4)	54	320	70	14	88	94	190	166	8	1
SEBM42	12	15	M42(x4,5)	63	400	70	14	88	94	190	166	8,1	1
SEBM48	15	16	M48(x5)	68	600	70	19	88	94	190	166	9	1

GRADE 8 KEY EYE POINT - METRIC THREAD



Part No.	W.L.L. (t) x (z)	Bolt Size	A	B	C	D	E	F	W	S	Mass Kg	
KEP-M10	0.40 (1)	M10 x 1.50 x 20	36	25	8	11	15	25	44	15	0.1	1
KEP-M12	0.75 (2)	M12 x 1.75 x 28	42	30	10	13	18	33	52	18	0.2	1
KEP-M16	1.50 (4)	M16 x 2.00 x 30	51	35	14	13	24	35	61	24	0.3	1
KEP-M20	2.30 (6)	M20 x 2.00 x 30	57	40	16	17	30	44	70	30	0.6	1
KEP-M24	3.20 (8)	M24 x 3.00 x 48	70	48	19	21	36	52	84	36	1.0	1
KEP-M30	4.50 (12)	M30 x 3.50 x 55	86	60	24	26	45	62	108	45	1.8	1
KEP-M36	7.00 (16)	M36 x 4.00 x 64	103	72	29	32	54	78	130	54	3.2	1
KEP-M42	9.00 (24)	M42 x 4.50 x 85	120	82	34	38	63	88	150	63	5.0	1
KEP-M48	12.00 (32)	M48 x 5.00 x 96	137	94	38	43	72	104	168	72	7.6	1

Grade 8 forged lifting components are manufactured from alloy steel in accordance with EN1677. All forged components are individually magnaflux crack detected after heat treatment, they are then individually proof load tested to 2.5 times working load limit in accordance with EN1677. Only components fully compliant with all aspects of EN1677 can be used in chain slings certified to EN818-4. The William Hackett Grade 8 lifting components are suitable for use in a temperature range of -40°C up to 200°C without reduction in working load limit. The Key Eye Point has a Design Factor of 4:1 and the Bolt is in a Black Finish.

Uses

- 21st century successor to the eye bolt
- Design features make the Key Eye Point resistant to side loading failure and accidental unscrewing

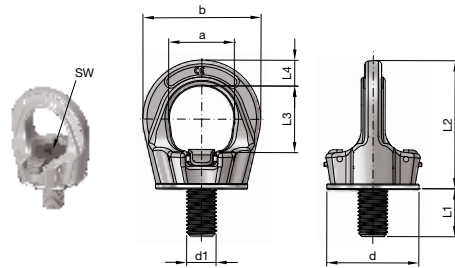
Load directions



- Nominal WLL -

Vertical load
- Straight Pull -
(z)-values

SAFETY RING BOLTS - ROTATABLE



Part No.	d1	Load capacity	a	b	d	L1	L2	L3	L4	SW	kg	
RBRM8	M8	300	25	45	35	15	53	27	10	6	0,17	1
RBRM10	M10	500	25	45	35	15	53	27	10	6	0,18	1
RBRM12	M12	700	30	55	43	20	63	32	12	8	0,29	1
RBRM16	M16	1500	35	64	50	25	70	36	14	10	0,45	1
RBRM20	M20	2000	40	69	54	30	78	41	16	12	0,58	1
RBRM24	M24	3000	50	86	69	35	97	50	18	14	1,10	1
RBRM30	M30	4000	60	110	90	45	114	60	25	17	2,20	1
RBRM36	M36	7000	70	132	108	55	136	70	31	19	3,90	1
RBRM42	M42	9000	80	152	126	65	153	76	36	22	5,80	1
RBRM48	M48	12000	95	179	148	75	179	95	42	24	8,90	1

Safety ring bolts, rotatable

Mounting and safety notices

Tool-free assembly and disassembly

The latch in pos.1 does not have any contact with the screw (picture 1)

The latch in pos. 2 has contact with the screw (picture 2)

Permissible usage

Load capacity according to the inspection certificate table of WLL in the shown directions of pull (picture 3).

- Adjust the lifting point in the permitted load direction before loading.
- For a durable fastening going up with a specified tightness.
- Loadable with a 4-fold safety under break in all directions.

Non permissible usage

Make sure when choosing the assembly that improper loading can not arise e.g. if:

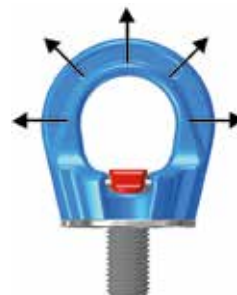
- The direction of pull is obstructed.
- Direction of pull is not in the foreseen area (picture 4).
- Loading ring rests against edges or loads.



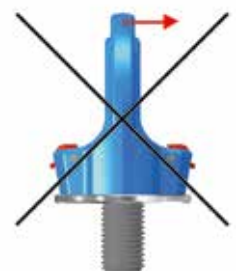
Picture 1



Picture 2



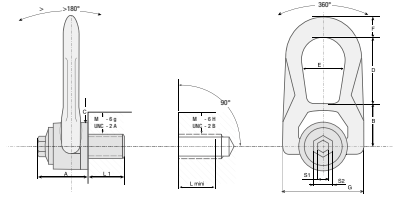
Picture 3



Picture 4

DOUBLE SWIVEL RING & SHACKLES

DOUBLE SWIVEL RING

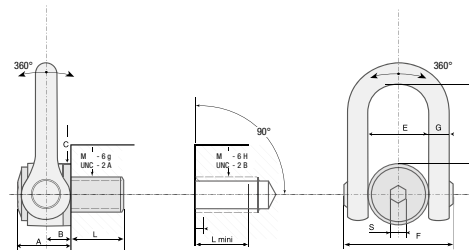


Part No.	SF 5:1 WLL (t)	SF 4:1 WLL (t)	Diameter	Ø	P	L1	N.m	S1	S2	A	B	C	D	E	F	G	Weight	
DSRM5	0,07	0,1	M5 (x0,8)			15	3	4		33	30	30	38	27	14	53	0,3 kg	1
DSRM6	0,15	0,2	M6 (x1)			15	4	5		33	30	30	38	27	14	53	0,3 kg	1
DSRM8	0,4	0,5	M8 (x1,25)			14	6	8	16	33	30	30	38	27	14	53	0,3 kg	1
DSRM10	0,7	0,9	M10 (x1,50)			17	10	8	16	33	30	30	38	27	14	53	0,3 kg	1
DSRM12	1,05	1,3	M12 (x1,75)			21	15	8	16	33	30	30	38	27	14	53	0,3 kg	1
DSRM14	1,4	1,8	M14 (x2)			23	30	8	20	45	42	45	54	38	17	76	0,9 kg	1
DSRM16	2	2,3	M16 (x2)			27	50	8	20	45	42	45	54	38	17	76	0,9 kg	1
DSRM18	2,3	2,3	M18 (x2,5)			27	70	8	20	45	42	45	54	38	17	76	0,9 kg	1
DSRM20	2,5	2,5	M20 (x2,5)			30	100	8	20	45	42	45	54	38	17	76	0,9 kg	1
DSRM22	3,5	4,5	M22 (x2,5)			33	120	14	24	62	55	60	83	55	25	117	2,6 kg	1
DSRM24	4,4	5,5	M24 (x3)			36	160	14	24	62	55	60	83	55	25	117	2,6 kg	1
DSRM27	5,7	6	M27 (x3)			40	200	14	24	62	55	60	83	55	25	117	2,7 kg	1
DSRM30	6	6,3	M30 (x3,5)			45	250	14	24	62	55	60	83	55	25	117	2,7 kg	1

Description

Double Swivel Ring. Double articulation allows it to line up perfectly with the sling
 Two ways of tightening: either by open-ended spanner or by Allen key
 From M4 to M30 as standard; from 0,05t to 6,3t.

DOUBLE SWIVEL SHACKLE

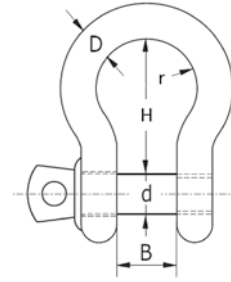



Part No.	SF 5:1 WLL (t)	SF 4:1 WLL (t)	Diameter	L1	N.m	S	A	B	C	D	E	F	G	Weight	
DSSM30	7,7	8,5	M30 (x3,5)	45	250	19	61	31	70	104	73	145	29	5,5 kg	1
DSSM33	8,5	10,5	M33 (x3,5)	50	250	19	61	31	70	104	73	145	29	5,5 kg	1
DSSM36	11	12	M36 (x4)	54	320	19	61	31	70	104	73	145	29	5,5 kg	1
DSSM36x3	11	12	M36 (x3)	54	320	19	61	31	70	104	73	145	29	5,5 kg	1
DSSM39	12	14	M39 (x4)	58	320	19	61	31	70	104	73	145	29	5,7 kg	1
DSSM42	13	15	M42 (x4,5)	63	400	19	61	31	70	104	73	145	29	5,8 kg	1
DSSM42x3	13	15	M42 (x3)	63	400	19	61	31	70	104	73	145	29	5,8 kg	1
DSSM45	14	16	M45 (x4,5)	63	400	19	61	31	70	104	73	145	29	5,7 kg	1
DSSM48	17	20	M48 (x5)	68	600	19	79	38	90	125	91	184	33	11 kg	1
DSSM48x3	17	20	M48 (x3)	68	600	19	79	38	90	125	91	184	33	11 kg	1
DSSM48x4	17	20	M48 (x4)	68	600	19	79	38	90	125	91	184	33	11 kg	1
DSSM52	19	20	M52 (x5)	68	600	19	79	38	90	125	91	184	33	11,2 kg	1
DSSM56	22	25	M56 (x5,5)	78	600	19	79	38	90	125	91	184	33	11,3 kg	1
DSSM56x4	22	25	M56 (x4)	78	600	19	79	38	90	125	91	184	33	11,4 kg	1
DSSM64	25	32,1	M64 (x6)	90	600	19	79	38	95	125	91	184	33	12,2 kg	1
DSSM64x4	25	32,1	M64 (x4)	90	600	19	79	38	95	125	91	184	33	12,2 kg	1

Description

Double Swivel Shackle
 Double articulation allows it to line up perfectly with the sling.
 From M30 to M64 as standard; for loads from 7,3t. to 32,1 t.

ALLOY STEEL BOW SHACKLES - GALVANISED



Part No.	Dim	B	d	H	r	WLL	
ASBSG11	3/8" x 7/16"	17mm	11mm	37mm	26mm	1000kg	1
ASBSG13	7/16" x 1/2"	18mm	13mm	43mm	29mm	1500kg	1
ASBSG16	1/2" x 5/8"	21mm	16mm	48mm	33mm	2000kg	1
ASBSG19	5/8" x 3/4"	27mm	19mm	60mm	43mm	3250kg	1
ASBSG22	3/4" x 7/8"	32mm	22mm	71mm	51mm	4750kg	1
ASBSG25	7/8" x 1"	37mm	25mm	84mm	58mm	6500kg	1
ASBSG28	1" x 1 1/8"	43mm	28mm	95mm	68mm	8500kg	1
ASBSG32	1 1/8" x 1 1/4"	46mm	32mm	104mm	75mm	9500kg	1
ASBSG35	1 1/4" x 1 3/8"	52mm	36mm	119mm	82mm	12000kg	1